

Newsletter #58
wb 21st February 2022
Bulbs and Shoots
Week

It's Wildlife Month
at The Ink Bin!

For wildlife month, we want to set a challenge to make signs around your school grounds that will create awareness for other pupils about the importance of wildlife and how we can help preserve it.



The Ink Bin's Eco Tip of The Week

Whilst we are still due some frosts over the next couple of months, why not use an old glass jar to protect some delicate shoots in your garden?



Share your eco win of the week with us!
recycle@theinkbin.co.uk

The Ink Bin News

Welcome to The Ink Bin Family ...

Friends of Potters Gate School



No Need
To Print!





This Week in Your Eco Club...

BULB WATCH



Storm Eunice

The most devastating storm in recent years has caused havoc and a big clear up operation will be in place over the week ahead.

Can you tend to the dislodged plants around your locality, collect blown-away litter or gather up old twigs and branches for the wildlife to make nests from?



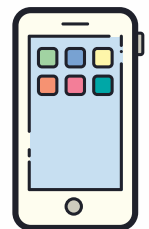
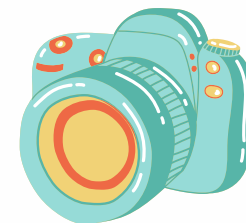
Why not head out and about and check out the bulbs sprouting in your school grounds or your local area? Jayson shared these photos of his Eco Club planting bulb beds last Autumn... I bet they are looking wonderful now!

Daffodils could flower for anywhere from six weeks to six months, depending on growing conditions. And they'll come back next year, too! Let the plant rebuild its bulb, and cut the leaves off only when they begin to yellow.

The Evolution of Bulbs

Bulbs have adapted to rapidly grow shoots to give them an advantage when favorable growing conditions are apparent

To help with the survival of bulbs once they have started growing in the spring, make sure to water your bulbs once a week until foliage dies back if there hasn't been a sufficient amount of rain.



*Get those cameras out to catch your wildlife finds!
But remember not to disturb habitats.*

Sprout Pencils



We love these pencils that grow!
When you've finally shaved your writing instrument down to an unusable length, simply flip that pencil round and stick it in the ground for them to grow into a plant.



Check out this
BBC News story online..



Climate change is causing UK plants to flower a month early

Plants flowering too early could be disastrous for hibernating and migrating animals, and for crops.



Global Wildlife Watch



Crocus is a plant that belongs to iris family. There are over 80 different species of crocus that originate from Southern Europe, Central Asia, China, Middle East and Africa. Crocus lives in alpine meadows, rocky mountainsides, scrublands and woodlands.



TEACHERS.. WhatsApp your images to us on 07712 577528 and save the number to your phone contacts!

in the news:

A seed vault in the arctic that was built to preserve seeds from war and disease has been restocked. This particular vault holds over 1.1 million seed types in order to help crops grow if climate change causes harvest to fail.